



BIKESHOW-SANTASUSANNA.COM

10-11 MAIG
· SANTA SUSANNA ·



10 MAIG | 9:45H

E-BIKE



GRAVEL

10 MAIG | 9:30H



YOUTH BTT

10 MAIG | 10:00H



11 MAIG | 9:00H

BTT XCO



INSTITUTIONAL SPONSORS:



Ajuntament de Santa Susanna



SPONSORS SUPERCUP:



SPONSOR CCI:



SUPPORTED BY:



SPONSORS GRAVEL RIDE TOUR:



OFFICIAL BIKE WASH:



OFFICIAL MAPPING:



ORGANIZING:



EVENT INFORMATION



The Bike Show will transform Santa Susanna into a gathering point for cycling enthusiasts, offering activities for all ages and skill levels. From cross-country, gravel, and e-bike events to children's races and the thrilling time trial, participants will enjoy a unique weekend surrounded by the natural beauty and stunning landscapes of Santa Susanna and its surroundings.

LOCATION



Zona esportiva, Santa Susanna (Barcelona).



EVENT INFORMATION

PARKING AND CAMPING CAR ZONE



Parking zone for vehicles:

<https://maps.app.goo.gl/2xNAb6ZJehdi85bA9>



Parking zone for camping cars:

<https://maps.app.goo.gl/2MCeouCWhCcAgugt9>



Ajuntament de
Santa Susanna



Costa
Barcelona



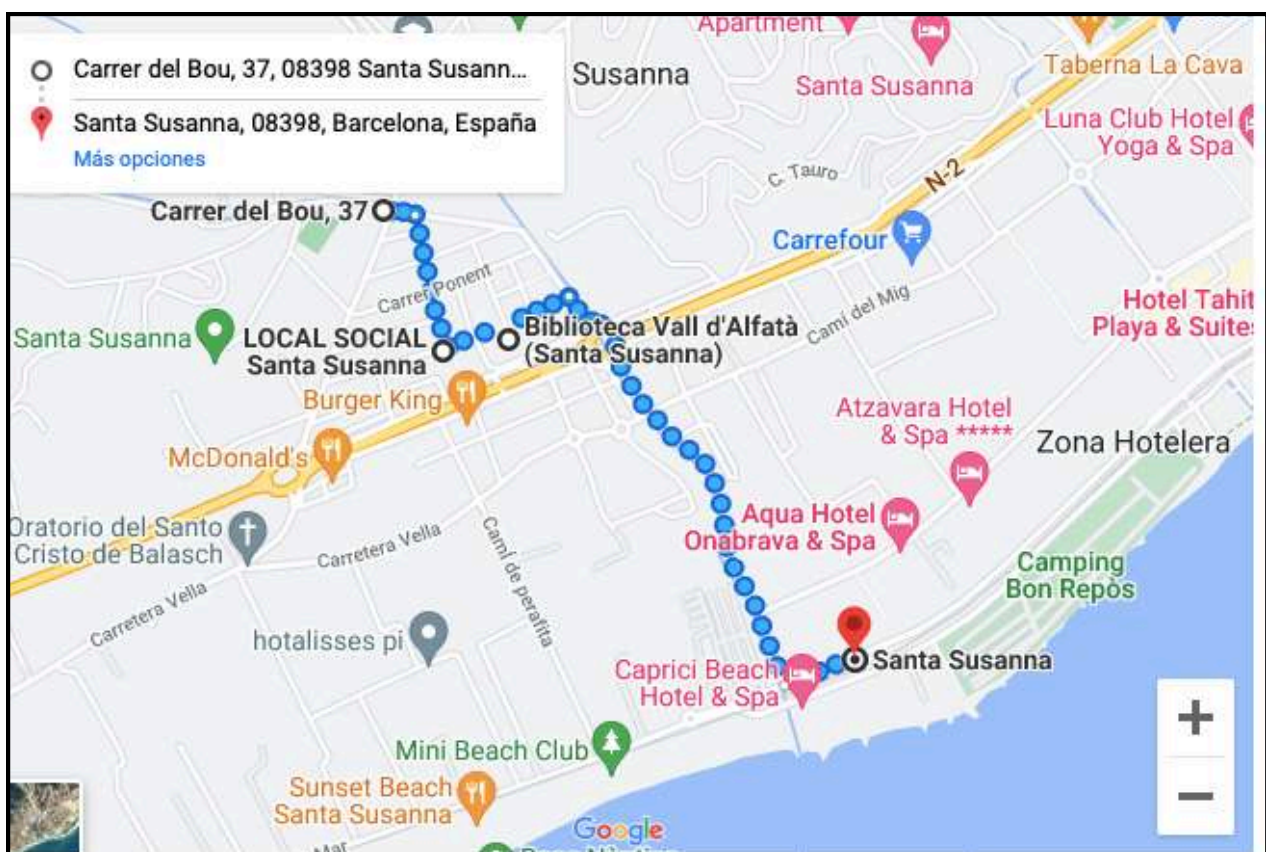
Diputació
Barcelona

HOW TO GET THERE

We motivate you to come and visit the Bike Show in Santa Susanna by public transport.

Here, we show you a recommended route to get from the train Station of Santa Susanna to the Bike Show.

Let's provide health!



Ajuntament de
Santa Susanna



Costa
Barcelona



Diputació
Barcelona

PROGRAM

SATURDAY 10 MAY

08.00h Bib pick-up **Gravel Ride by Nutrisport and Ebike Tour**

09:00h Start bib pick-up for the rest of races

09:30h Start Gravel Ride by Nutrisport Santa Susanna

09:45h Start E-bike Tour Santa Susanna

10:00h Start Super Cup Youth

12:45h Popular school race

13:15h Award ceremony Super Cup Youth

16:00h Start Time Trial Copa Catalana Biking Point

Once the Time Trial is finished, the award ceremony will take place

SUNDAY 11 MAY

07.30h Bib pick-up (until 30 minutes before each start)

09:00h Start Shimano Super Cup Massi Cadet, Junior (F), Muster 30/40 (F) and Master 40/50/60 (M)

10:40h Start Shimano Super Cup Massi Elit (F)/ S23 (F), Junior (M) and Master 30 (M)

10:50h Award ceremony of the first race

12:30h Start Shimano Super Cup Massi Elit (M)/ S23 (M)

14:00h Award ceremony



REGISTRATIONS

Registrations can be completed via the registration form available on the event website until the Wednesday before the race at 11:59 p.m. The Payment must be made directly on the website. If the payment is not completed, the registration will not be confirmed.

Phone: +34 938 088 091

Email hola@ocisport.net

Website: www.ocisport.net



WWW.SUPERCUPMTB.COM

PADDOCK

For teams wishing to make a reservation, there will be a one-time payment for all events in the Shimano Super Cup Massi 2025. Please fill out the paddock reservation form on the website.

Email: hola@ocisport.net

Website: www.ocisport.net



MTB SUPERCUP YOUTH 2025



- 1 01 FEB ST. FRUITÓS DE BAGES**
BARCELONA
- 2 22 FEB BANYOLES**
GIRONA ALEVÍN | INFANTIL
- 3 10 MAY SANTA SUSANNA**
BARCELONA
- 4 31 MAY NATURLAND**
ANDORRA
- 5 20 SEP SEA OTTER EUROPE**
GIRONA

OCISPORT YOUTH
SPORT FUTURE GENERATIONS ACADEMY

POWERED BY

SHIMANO

MASSI

OFFICIAL BIKE WASH

PRORIDE
by PROQUIMIA

SUPPORTED BY

FEDERACIÓ CATALANA
CICLISME
1974

esportcat
Generalitat de Catalunya

OFFICIAL MAPPING

wikiloc

ORGANIZING

OCISPORT
OUTDOOR EXPERIENCES

Instagram icon [supercup_cci](#)

www.ocisportacademy.com

Instagram icon [ocisport](#)



The Super Cup Youth in Santa Susanna is the third YOUTH race of the year. There will be three different circuits: one for the Prebenjamí (U6) and Benjamí (U8) categories, one for Principiants (U10), and another for the Aleví (U12) and Infantil (U14) categories.

The two youngest categories are non-competitive, as the main goal is to promote sports among the youngest participants. Therefore, all children of this categories will receive a participation medal as a gift. However, in the Infantil, Aleví, and Principiant categories, prizes will be awarded to the top three finishers in each category.

The bib number is obtained at the first event in which the participant competes and will remain the same for all subsequent races. In case of loss, a fee of 5 euros will be charged for a new plate and bib number reassignment.

PROGRAM

SATURDAY 10 MAY

09.00h – Bib pick-up (until 30 minutes before each start)

10.00h - Start **U6** Super Cup Youth

10.15h - Start **U8** Super Cup Youth

10.30h - Start **U10** Super Cup Youth

10.55h - Start **U12** Super Cup Youth

11.45h - Start **U14** Super Cup Youth

At 12:45pm, there will be a non-competitive popular ride called OPEN ESCOLAR, for all children who don't want to compete but wish to ride for a while with friends or family and try the same route as the more adventurous participants, but without any pressure.

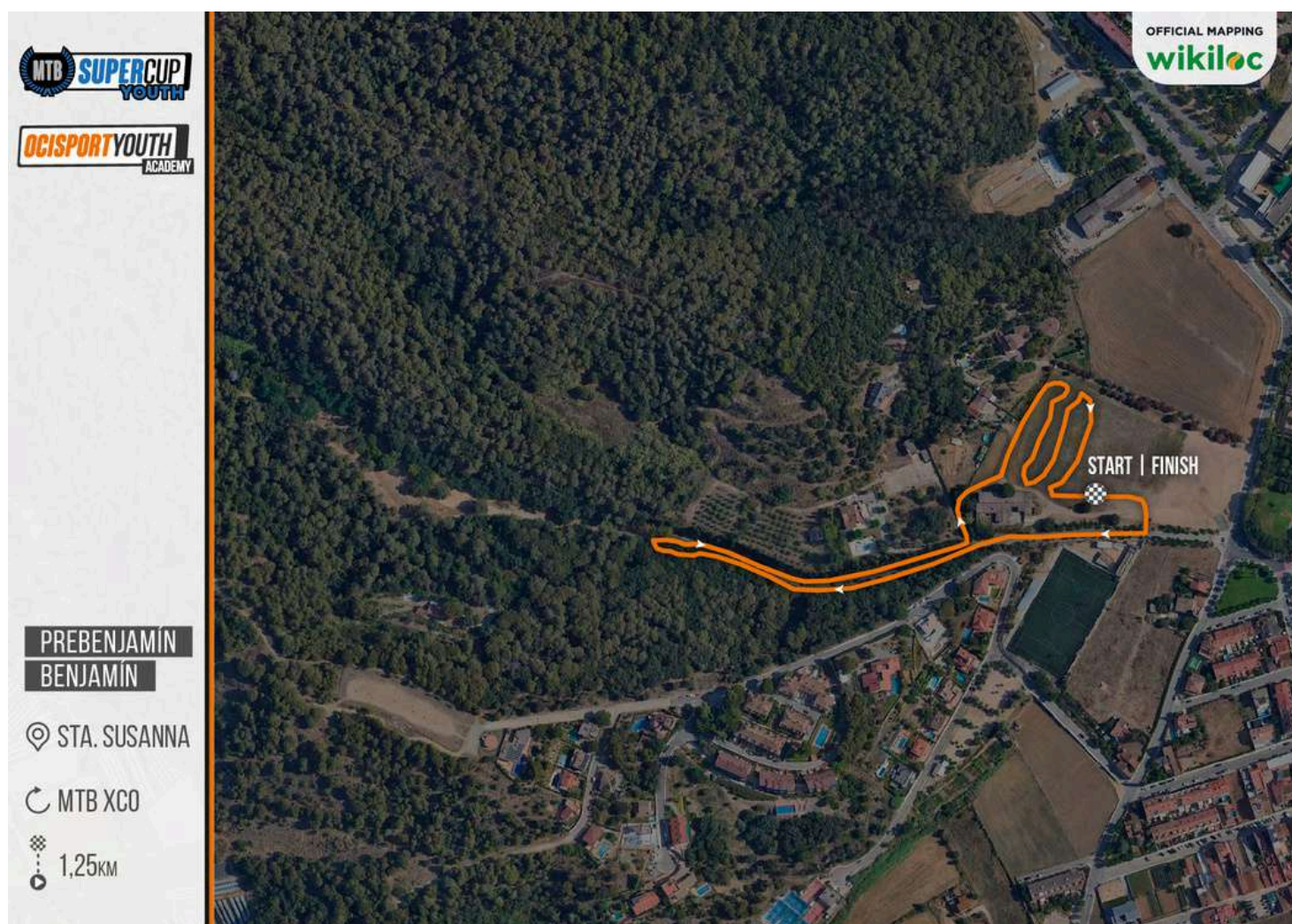
13.15h Award ceremony of the competitive **SUPER CUP YOUTH** categories

[TO SEE THE RULES, CLICK HERE](#)



TRACK

U6 - U8



POWERED BY

SHIMANO

MASSI

OFFICIAL BIKE WASH

PRORIDE
by PROQUIMIA

SUPPORTED BY

FEDERACIÓ
CATALANA
CICLISME
1974

esportcat
Generalitat
de Catalunya

OFFICIAL MAPPING

wikiloc

ORGANIZING

OCISPORT
OUTDOOR EXPERIENCES

supercup_cci

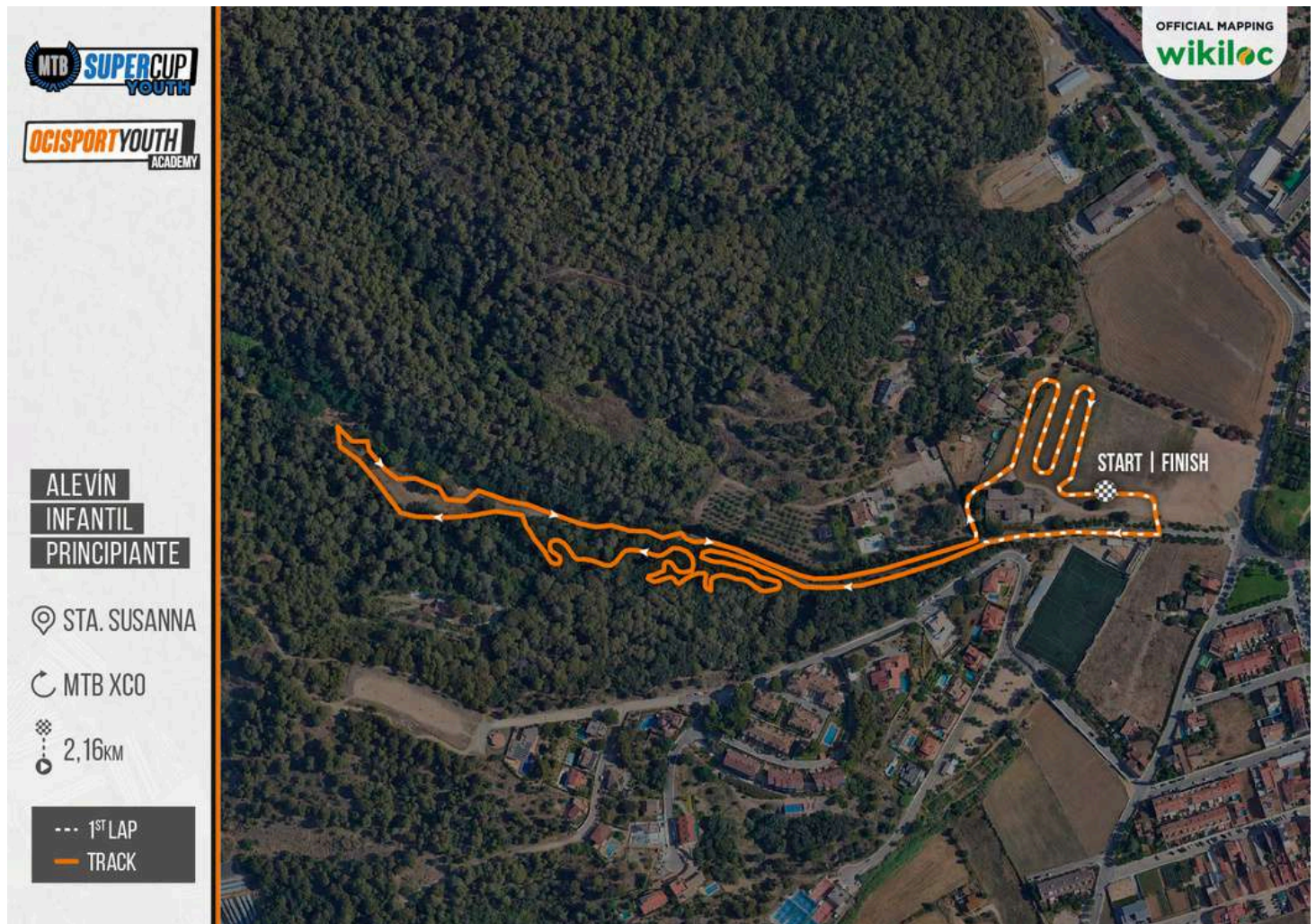
www.ocisportacademy.com

ocisport



TRACK

U10 - U12 - U14



POWERED BY

SHIMANO

MASSI

OFFICIAL BIKE WASH

PRORIDE
by PROQUIMIA

SUPPORTED BY

FEDERACIÓ CATALANA
CICLISME
1974

esportcat
Generalitat de Catalunya

OFFICIAL MAPPING

wikiloc

ORGANIZING

OCISPORT
OUTDOOR EXPERIENCES

📱 [supercup_cci](#)

www.ocisportacademy.com

📱 [ocisport](#)

SHIMANO

SUPERCUP MTB

MASSI

2025

COPA CATALANA

INTERNACIONAL BTT

Biking

UCI



10-11 MAY

STA. SUSANNA

BARCELONA

SATURDAY 10

09:00H BIB PICK UP UNTIL 30 MINUTES BEFORE EVERY RACE

10:00H START SUPER CUP YOUTH



13:15H AWARDS CEREMONY

16:00H TIME TRIAL CCI AWARDS CEREMONY AT THE END



SUNDAY 11

08:00H BIB PICK UP UNTIL 30 MINUTES BEFORE EVERY RACE

09:00H START CADET | JUNIOR (W) | M30 (W) | M48/50/60

10:40H START ELITE/U23 (W) | JUNIOR (M) | M30 (M)

10:50H AWARDS CEREMONY

12:30H START ELITE/U23 (M)

14:00H AWARDS CEREMONY



Ajuntament de
Santa Susanna



SANTA SUSANNA



Costa
Barcelona



Diputació
Barcelona

TITLE SPONSOR

SHIMANO

MAIN SPONSOR

MASSI

OFFICIAL SPONSOR

INVERSE

Powerbar

SIROKO

OFFICIAL BIKE WASH

PRORIDE

SUPPORTED BY



SHIMANO
COSTA BRAVA | GIRONA
SEA OTTER EUROPE
GARMIN

OFFICIAL MAPPING

wikiloc

ORGANIZING

OCISPORT

WWW.SUPERCUPMTB.COM

[COPACATALANAINTERNACIONALBTT](https://www.facebook.com/COPACATALANAINTERNACIONALBTT)

[SUPERCUP.CCI](https://www.instagram.com/SUPERCUP.CCI)

WWW.SUPERCUPMTB.COM

SHIMANO
SUPERCUP MTB

SHIMANO
SUPERCUP MTB

SHIMANO SUPERCUP MTB MASSI

2025



- | | | |
|----------------------------------------------|--------------------------------------------------|-------------------------------------------------------------------|
| 8-9 FEB LA NUCÍA
ALICANTE | 23 MAR SABIÑÁNIGO
HUESCA | 31 MAY NATURLAND
SANT JULIA DE LÓRIA ANDORRA |
| 22-23 FEB BANYOLES
GIRONA | 11 MAY STA. SUSANNA
BARCELONA | 28 SEP SEA OTTER EUROPE
GIRONA |

TITLE SPONSOR 	MAIN SPONSOR 	OFFICIAL SPONSOR 	OFFICIAL BIKE WASH
SUPPORTED BY 			OFFICIAL MAPPING ORGANIZING



SHIMANO SUPERCUP MASSI



The Shimano Super Cup Massi is a premier global Mountain Bike competition. Since its inception in 2002, its prestige has grown impressively. After many years, it has become the second-highest UCI point-scoring circuit in the world.

This circuit consists of 6 UCI-sanctioned XCO format events, all of which count toward the World Ranking.



TITLE SPONSOR

SHIMANO

MAIN SPONSOR

MASSI

OFFICIAL SPONSOR

INVERSE

Powerbar

SIROKO

OFFICIAL BIKE WASH

PRORIDE

SUPPORTED BY

UCI

CICLISMO

FEDERACIÓ CATALANA CICLISME

esportcat
Generalitat de Catalunya

CLUB CICLISTA
SANTA SUSANNA

Centres BTT

SHIMANO
COSTA BRAVA | GIRONA
SEA OTTER EUROPE
GARMIN

OFFICIAL MAPPING

wikiloc

ORGANIZING

OCISPORT
OUTDOOR EXPERIENCES

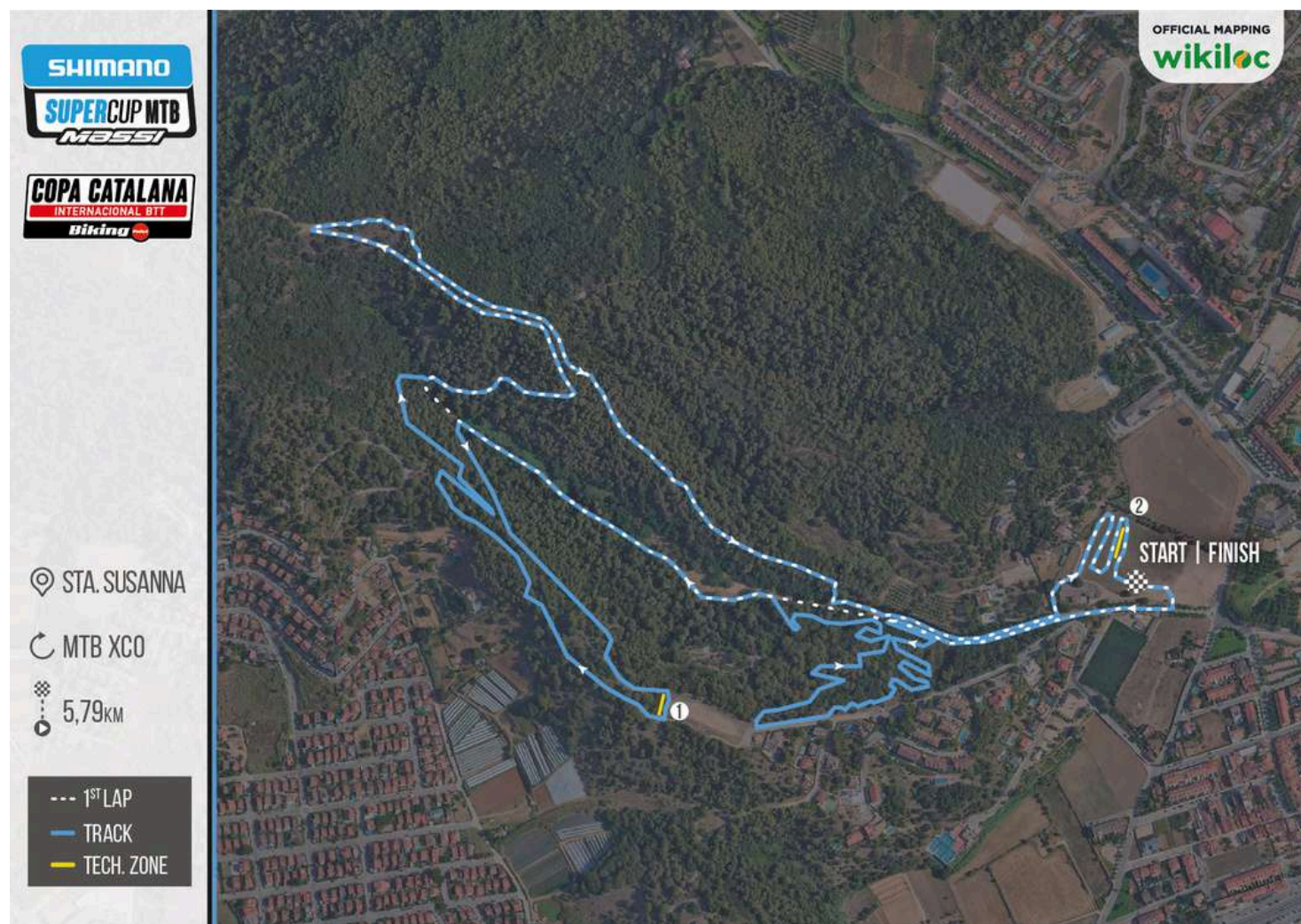
WWW.SUPERCUPMTB.COM

[COPACATALANAINTERNACIONALBTT](https://www.facebook.com/COPACATALANAINTERNACIONALBTT)

[SUPERCUP.CCI](https://www.instagram.com/SUPERCUP.CCI)

WWW.SUPERCUPMTB.COM

TRACK



wikiloc

Accede a las rutas oficiales
de OCISPORT BIKE en Wikiloc

TITLE SPONSOR

SHIMANO

MAIN SPONSOR

MASSI

OFFICIAL SPONSOR

INVERSE

Powerbar

SIROKO

OFFICIAL BIKE WASH

PRORIDE

SUPPORTED BY

UCI

FEDERACIÓ
CATALANA
CICLISME

FEDERACIÓ
CATALANA
CICLISME

esportcat
Generalitat
de Catalunya

CLUB CICLISTA
SANTA SUSANNA

Centres BTT

SHIMANO
COSTA BRAVA | GIRONA
SEA OTTER EUROPE
GARMIN

OFFICIAL MAPPING

wikiloc

ORGANIZING

OCISPORT
OUTDOOR EXPERIENCES

WWW.SUPERCUPMTB.COM

COPACATALANAINTERNACIONALBTT

SUPERCUP.CCI

WWW.SUPERCUPMTB.COM



BIB NUMBERS

In the first race a participant attends, they will receive a bib number, which will remain the same for the following races in the circuit. In case of loss, a fee of 5 euros will be charged for the new bib and reassignment of the participant. During the first race, participants will also receive the circuit's commemorative t-shirt as a gift.

CHAMPIONSHIP POINTS

As for the GENERAL classification of the Super Cup, the 6 best results from each rider will count towards the standings.

The points distribution for the championship will be as follows:

CHAMPIONSHIP POINTS							
1	300	26	33	51	18	76	12
2	262	27	33	52	18	77	12
3	232	28	33	53	18	78	12
4	210	29	33	54	18	79	12
5	192	30	33	55	18	80	12
6	180	31	30	56	18	81	9
7	168	32	30	57	18	82	9
8	156	33	30	58	18	83	9
9	142	34	30	59	18	84	9
10	142	35	30	60	18	85	9
11	120	36	27	61	15	86	9
12	114	37	27	62	15	87	9
13	108	38	27	63	15	88	9
14	102	39	27	64	15	89	9
15	96	40	27	65	15	90	9
16	90	41	24	66	15	91	6
17	84	42	24	67	15	92	6
18	78	43	24	68	15	93	6
19	72	44	24	69	15	94	6
20	66	45	24	70	15	95	6
21	60	46	21	71	12	96	6
22	54	47	21	72	12	97	6
23	48	48	21	73	12	98	6
24	42	49	21	74	12	99	6
25	36	50	21	75	12	100	6
						101<	3

TITLE SPONSOR

SHIMANO

MAIN SPONSOR

MASSI

OFFICIAL SPONSOR

INVERSE

Powerbar

SIROKO

OFFICIAL BIKE WASH

PRORIDE

SUPPORTED BY

UCI

FEDERACIÓ
CATALANA
CICLISME

FEDERACIÓ
CATALANA
CICLISME

esportcat
Generalitat
de Catalunya

CLUB CICLISTA
SANTA SUSANNA

Centres BTT

SHIMANO
COSTA BRAVA | GIRONA
SEA OTTER EUROPE
GARMIN

OFFICIAL MAPPING

wikiloc

ORGANIZING

OCISPORT
OUTDOOR EXPERIENCES



PRIZE MONEY

The UCI points will be awarded in the XCO race as follows:

Ranking	HC		C1		C2	
	ÉLITE (M F)	JÚNIOR (M F)	ÉLITE (M F)	JÚNIOR (M F)	ÉLITE (M F)	JÚNIOR (M F)
1	1.000€	200€	600€	130€	250€	80€
2	800€	130€	500€	100€	200€	65€
3	600€	100€	400€	80€	150€	50€
4	500€	80€	300€	65€	125€	30€
5	400€	65€	250€	55€	100€	25€
6	300€	50€	200€	45€	90€	
7	250€	45€	150€	40€	80€	
8	200€	30€	125€	30€	70€	
9	150€	25€	100€	25€	60€	
10	100€	20€	50€	20€	50€	
TOTAL	4.300€	745€	2.675€	590€	1.175€	250€

*The amounts are subject to changes/modifications according to the updates in the regulations of the International Cycling Union (UCI).

The prizes will be paid to the corresponding winners via bank transfer within a maximum of two months after the race. The procedure for receiving the prize will be provided in the rider's dossier and on the information panel at each event.

If you are one of the winners, you can send an email to: rperez@ocisport.net, providing your personal and banking details (ID and bank information), so the organization can validate your identity and process the bank transfer for the prize awarded.

RULES



For the Team Classification, points will be awarded as follows:

The following categories will score with 100% of the points:

- 2 Élite
- 2 Sub 23
- 2 Fémina Elite
- 2 Fémina Sub 23

The following categories will score with 50% of the points:

- 2 Junior Masculino
- 2 Junior Fémina
- 2 Cadete Masculino
- 2 Cadete Fémina
- 2 Máster 30 Masculino
- 2 Máster 30 Fémina
- 2 Máster 40 Masculino
- 2 Máster 40 Fémina
- 2 Máster 50 Masculino

UCI POINTS

The distribution of UCI points will be as follows, according to the category:

UCI POINTS - ONE DAY RACE							
PLACE	HC		C1		C2	XCO JUNIOR	XCO JUNIOR SERIES
	ELITE/U23	U23**	ELITE/U23	U23**	ELITE/U23	JUNIOR	JUNIOR
1	100	60	60	15	30	20	90
2	80	40	40	10	25	18	70
3	60	30	30	5	15	16	60
4	50	25	25	3	12	14	50
5	40	20	20	1	10	12	40
6	35	18	18	X	8	10	35
7	30	16	16		6	8	30
8	27	14	14		4	6	27
9	24	12	12		2	4	24
10	22	10	10		1	2	22
11	20	8	8		X	X	20
12	18	6	6				18
13	16	4	4				16
14	14	2	2				14
15	12	1	1				12
16	10	X	X				10
17	9						8
18	8						7
19	7						6
20	6						5
21	5						4
22	4						3
23	3						2
24	2						1
25	1						X
26	X						

TITLE SPONSOR

SHIMANO

MAIN SPONSOR

MASSI

OFFICIAL SPONSOR

INVERSE **Powerbar**

OFFICIAL BIKE WASH

PRORIDE

SUPPORTED BY

UCI

FEDERACIÓ CATALANA DE CICLISME

FEDERACIÓ CATALANA DE CICLISME

esportcat
Generalitat de Catalunya

CLUB CICLISTA SANTER SUSSANA

Centres BTT

SHIMANO
COSTA BRAVA | GIRONA
SEA OTTER EUROPE
GARMIN

OFFICIAL MAPPING

wikiloc

ORGANIZING

OCISPORT
OUTDOOR EXPERIENCES

COPA CATALANA

INTERNACIONAL BTT

2025

Biking Point



C3 2 FEB | ST. FRUITÓS DE BAGES
BARCELONA

HC 22-23 FEB | BANYOLES
GIRONA

C2 16 MAR | CORRÓ D'AMUNT
BARCELONA

C1 10-11 MAY | STA. SUSANNA
BARCELONA

C1 31 MAY | NATURLAND
SANT JULIÀ DE LÒRIA | ANDORRA

C2 20 SEP | SEA OTTER EUROPE
GIRONA

TITLE SPONSOR

Biking Point

MAIN SPONSOR

MASSI

OFFICIAL SPONSOR

INVERSE

nutrisport

OFFICIAL BIKE WASH

PRORIDE
by PROQUIMA

SUPPORTED BY

UCI

REAL FEDERACIÓN ESPAÑOLA
CICLISMO

FEDERACIÓ
CATALANA
CICLISME
1994

esportcat
Generalitat
de Catalunya

OFFICIAL MAPPING

wikiloc

ORGANIZING

OCISPORT
OUTDOOR EXPERIENCES

WWW.COPACATALANABTT.COM

[COPACATALANAINTERNACIONALBTT](https://www.facebook.com/COPACATALANAINTERNACIONALBTT)

[SUPERCUP.CCI](https://www.instagram.com/SUPERCUP.CCI)

WWW.COPACATALANABTT.COM



CRI Race Rules

- The approximate distance of a CRI race should be between 3 and 8 km, or a time equivalent to 5-20 minutes of racing. The route may or may not coincide with the XCO race course. In any case, the signage will be specific to each race.
- The leader must wear the jersey provided by the organization.
- The starting order will be in reverse order of the overall standings of the Copa Catalana. If a rider does not show up at their assigned time, they will start when authorized by the Technical Jury, and their time will be recorded from their previously assigned start time. The time interval between riders will be 30 seconds.
- It is not allowed to draft behind an opponent if being lapped.
- The circuit will close 15 minutes before the start of the race.

TITLE SPONSOR



MAIN SPONSOR



OFFICIAL SPONSOR



OFFICIAL BIKE WASH



SUPPORTED BY



OFFICIAL MAPPING



ORGANIZING



GRAVEL

SANTA SUSANNA

RIDE TOUR

 **nutrisport.**

10 MAIG
SANTA SUSANNA



Ajuntament de
Santa Susanna



MAIN SPONSOR



OFFICIAL SPONSOR



OF. BIKE WASH.



SUPPORTED BY



OF. MAPING



ORGANIZING



 WWW.GRAVELRIDETOURL.COM

 GRAVEL RIDE

 @GRAVELRIDETOURL



Start time: 9:30 AM

Location: Santa Susanna Sports Area

It will be a non-competitive Gravel ride. This format includes sections of asphalt and/or paved roads combined with sections of forest tracks with low or no technical difficulty.

Participants will follow a 62,85km route, starting from Santa Susanna and heading towards the surroundings of the Montnegre and el Corredor Natural Park. The route will continue towards Fogars de la Selva, where riders will pass closely around the town before heading towards Tordera, Palafolls, and finishing at the same starting point, Santa Susanna, crossing the C32 via an underpass.



THERE WILL ONLY BE ONE REFRESHMENT ZONE DURING THE COURSE

It will be at km 41,4.

Location in the map



At the finish zone, there will be a final refreshment zone for everybody.



EBIKE TOUR SANTA SUSANNA

Start time: 9:45 AM

Location: Santa Susanna Sports Area

A route designed for the E-bike style, to also enjoy the views, landscape, track, and gastronomy, with a route that crosses 6 hills and passes through the Montnegre Natural Park.

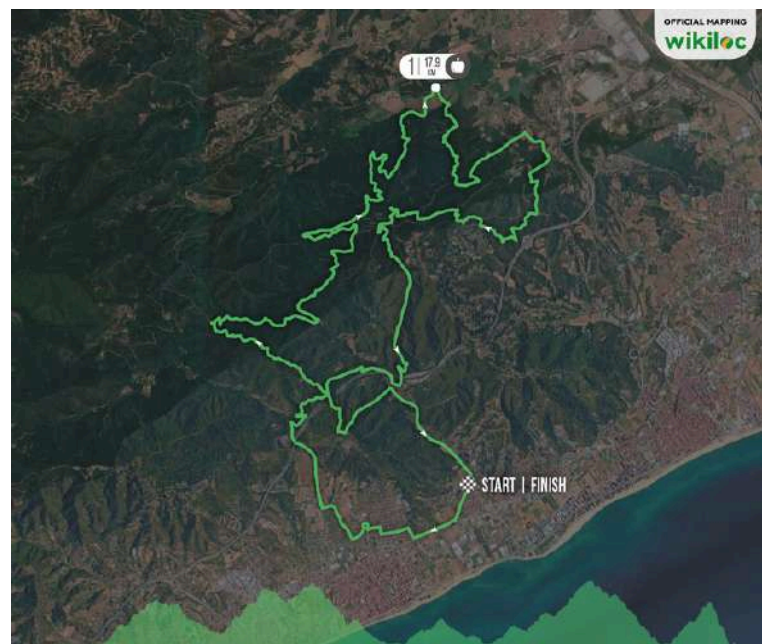
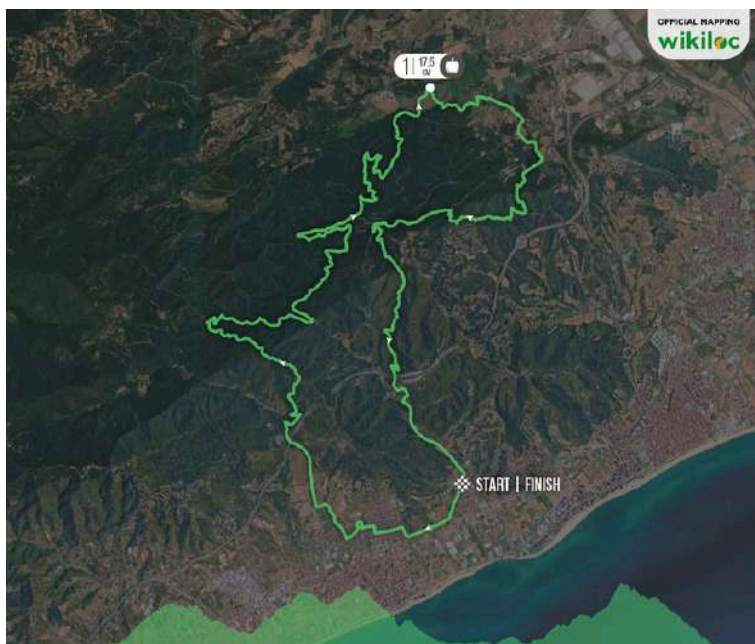
Total distance: **34 KM** (technical) and **31 KM** (basic)

Solid/liquid refreshment

There will be a refreshment station on the circuit, located approximately at kilometer 17,5 of the track. It will include a complete breakfast, and upon arrival, there will be a great lunch waiting.

BASIC

TECHNIC



ADDITIONAL INFORMATION

MAIN HOSPITAL

Hospital Comarcal Sant Jaume de Calella

Address: Carrer de Sant Jaume, 209, 217, 08370 Calella, Barcelona

Emergency service open 24 hours

Phone: 937 69 02 01

EMERGENCY CONTACT

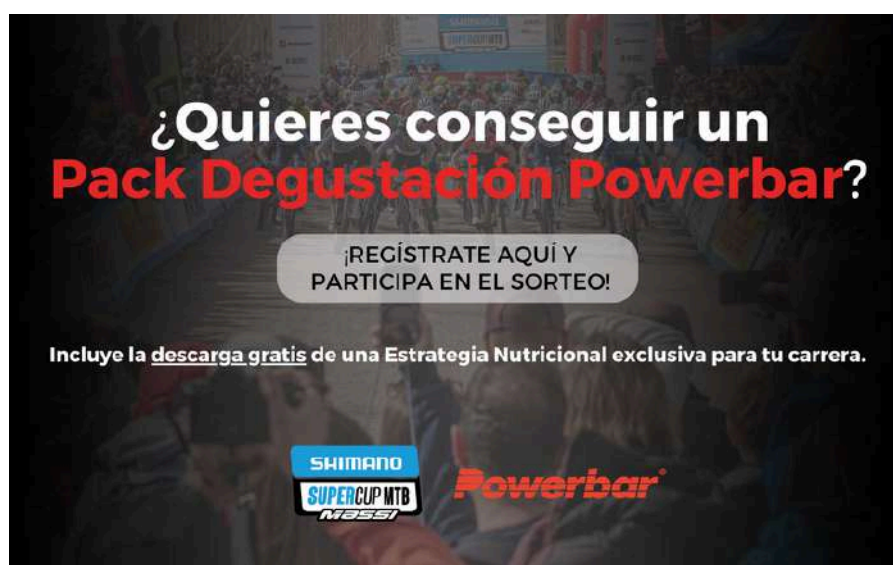
Organization: +34 638 602 777

Emergencies: 112 (only if it's not possible to contact organization)

ORGANIZATIONS

Phone: +34 663 980 161

Email: hola@ocisport.net



¿Quieres conseguir un Pack Degustación Powerbar?

¡REGÍSTRATE AQUÍ Y PARTICIPA EN EL SORTEO!

Incluye la descarga gratis de una Estrategia Nutricional exclusiva para tu carrera.

SHIMANO SUPERCUP MTB MASSI Powerbar

JOIN THE GIVEAWAY

TITLE SPONSOR

SHIMANO

MAIN SPONSOR

MASSI

OFFICIAL SPONSOR

INVERSE **Powerbar**

OFFICIAL BIKE WASH

PRORIDE

SUPPORTED BY

UCI

CICLISMO

FEDERACIÓ CATALANA CICLISME

esportcat
Generalitat de Catalunya

CLUB CICLISTA SANTA SUSANNA

Centres BTT

SHIMANO
COSTA BRAVA | GIRONA
SEA OTTER EUROPE
GARMIN

OFFICIAL MAPPING

wikiloc

ORGANIZING

OCISPORT
OUTDOOR EXPERIENCES

INSTITUTIONAL SPONSORS



TITLE SPONSOR



MAIN SPONSOR



OFFICIAL SPONSORS



OFFICIAL BIKE WASH



SUPPORTED BY



OFFICIAL MAPPING



ORGANIZING

