



2024



Ajuntament de
Santa Susanna



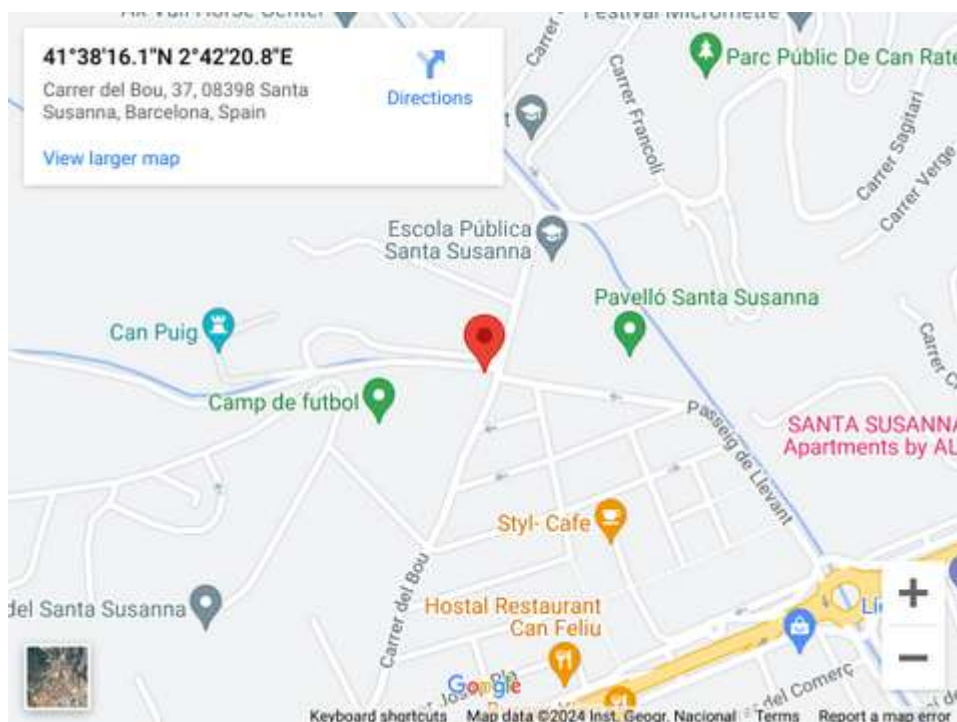
EVENT INFORMATION



Santa Susanna will be the capital of cycling with a Bike Show full of sports activities aimed at all bicycle lovers. Cross-country, gravel, e-bike, children's races and the epic time trial that will allow us to enjoy cycling in a weekend and the privileged territory of Santa Susanna and its natural surroundings.

LOCATION

 Zona deportiva, Santa Susanna (Barcelona)



EVENT INFORMATION

PARKINGS AND MOTORHOME ZONE



Parking for cars:

<https://maps.app.goo.gl/2xNAb6ZJehdi85bA9>



Motorhome parking:

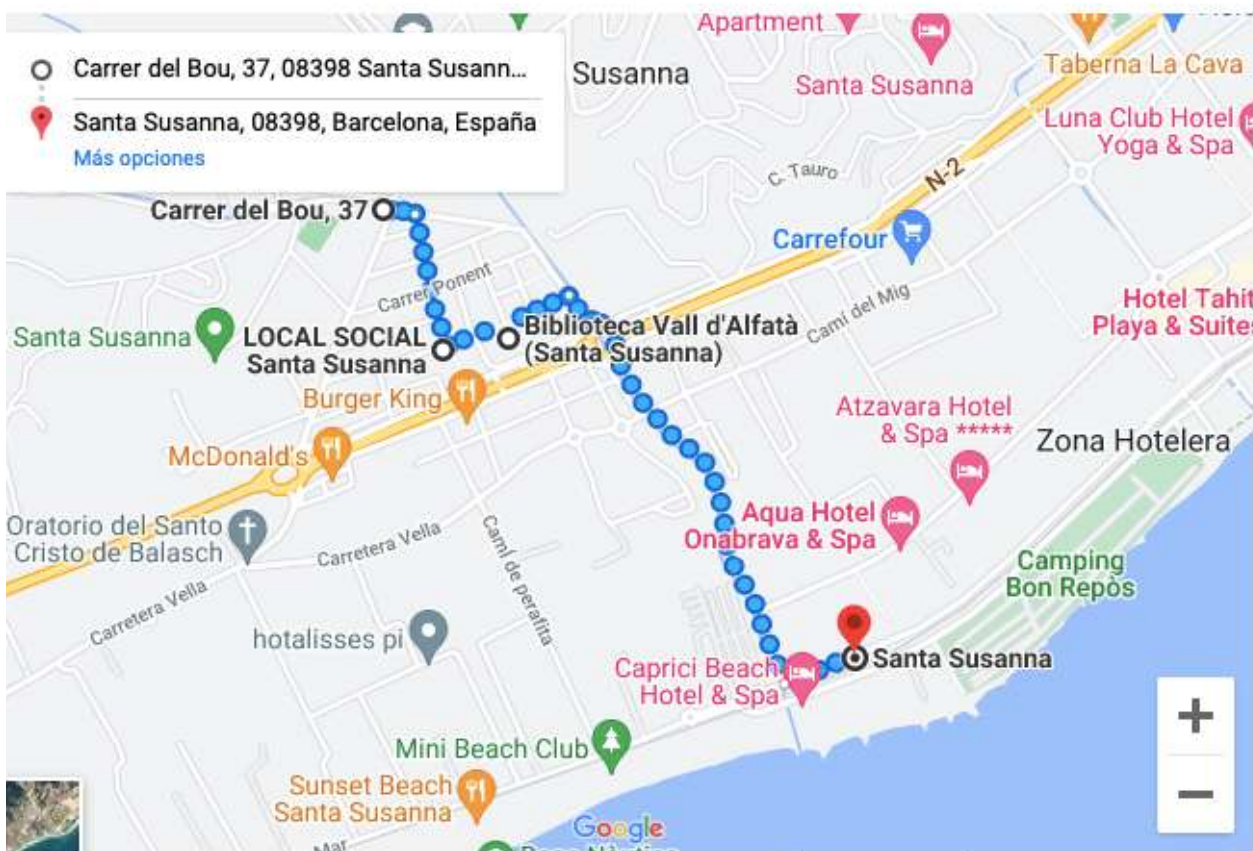
<https://maps.app.goo.gl/2MCeouCWhCcAgugt9>

HOW TO GET THERE?

We encourage you to come see the Bike Show Santa Susanna festival by public transportation.

Here we present a recommended route to take on foot from the Santa Susanna Cercanías Renfe train station.

Let's do health!



PROGRAM

SATURDAY 6 OF APRIL

08.00h Bib numbers pick up for Gravel Ride and E-bike Day

09:00h Bib numbers pick up for Super Cup Youth

09:45h Start Gravel Ride Tour Santa Susanna

10.00h Start Ebike Day Santa Susanna

10:00h Start Super Cup Youth

13:00h Start Kids race (no competition)

13:15h Ceremony awards Super Cup Youth

16:00h Start CRI Biking Point

At the end of the race there will be the CRI awards ceremony.

SUNDAY 7 OF APRIL

07.30h Bib numbers pick up for Shimano Super Cup Massi

09:00h Start Shimano Super Cup Massi: Cadet (W/M), Junior (F), Master 30/40 (W) and Master 40/50/60 (M)

10:40h Start Shimano Super Cup Massi: Elit (W), U23 (F), Junior (M) and Master 30 (M)

10:50h Ceremony Awards of the 1st Race

12:30h Start Shimano Super Cup Massi: Elit (M) and U23 (M)

14:00h Ceremony awards



REGISTRATIONS

Registrations can be made through the registration form available on the event website until Wednesday before the race at 11:59 p.m.

For any questions contact:

Phone: +34 938 088 091

E-mail: hola@ocisport.net



WWW.SUPERCUPMTB.COM

PADDOCK

For teams that want to make a reservation, there will be a single payment for all events of the Shimano Super Cup Massi 2024.

For the Super Cup Youth event you can also reserve a paddock space.

Fill out the Paddock reservation form on the website or via email: furgell@ocisport.net





The Super Cup Youth in Santa Susanna is the second YOUTH race of the year. There will be three different circuits, one for the Prebenjami and Benjamin categories, one for Beginners and another for the Alevi and Children categories.

The smallest categories are not competitive, since the main objective is to promote the sport among the little ones, so everyone will have a participation gift medal, but in the Children's, Alevín and Beginner categories, prizes will be awarded to the three first in each category.

The number is acquired in the first race of the circuit in which you participate and will be the same for all subsequent races. (In case of loss, 5 euros will be charged for the new plate and the reassignment of the number)

PROGRAM

09.00h – Bib numbers pick up (until 30 minuts before each start)

10.00h - Start **BENJAMÍN** Super Cup Youth

10.15h - Start **PRE-BENJAMÍN** Super Cup Youth

10.30h - Start **PRINCIPIANTE** Super Cup Youth

10.55h - Start **ALEVÍN MASCULINO** Super Cup Youth

11.35h - Start **ALEVÍN Y INFANTIL FEMENÍNO** Super Cup Youth

12.15h - Start **INFANTIL MASCULINO** Super Cup Youth

At 13:00h there will be a popular, non-competitive outing, called OPEN SCHOOL, for all those boys and girls who do not want to compete but want to pedal for a while with friends or family and try the same route as the most adventurous but without any pressure. .

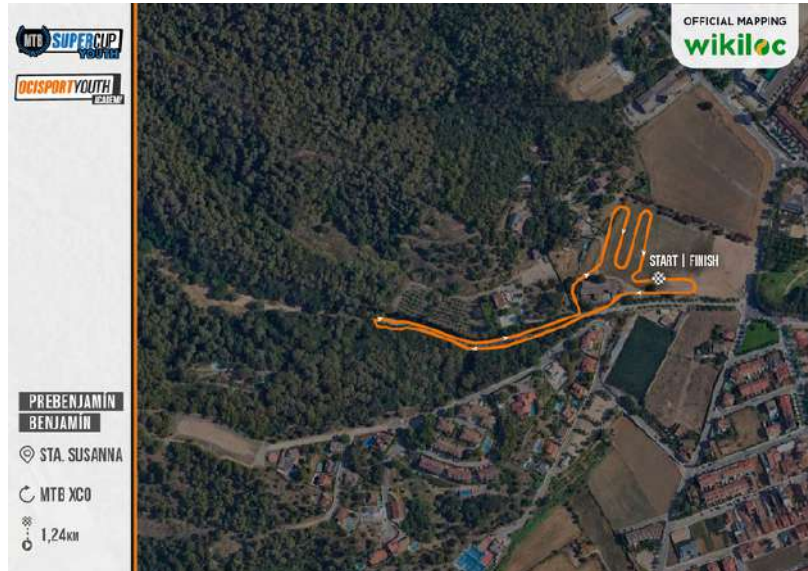
13.15h Awards ceremony for the competitive categories of the SUPER CUP YOUTH

READ THE RULES [HERE](#)

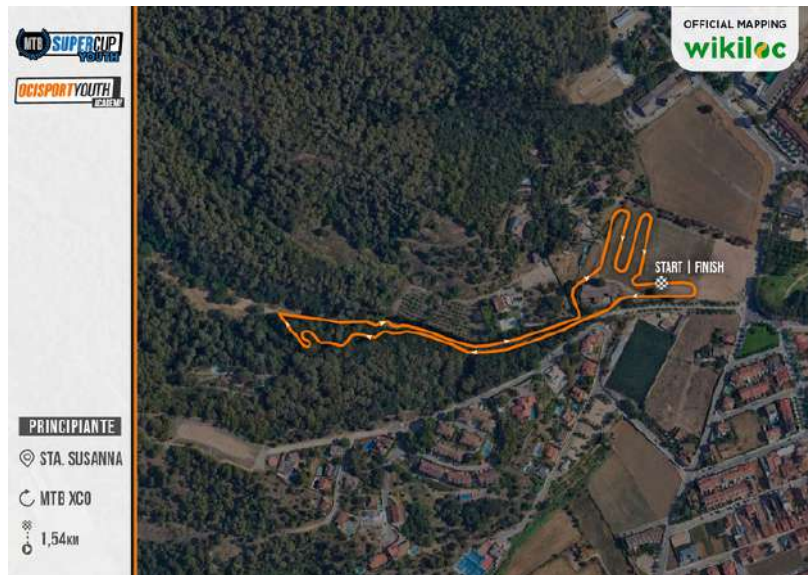


TRACKS

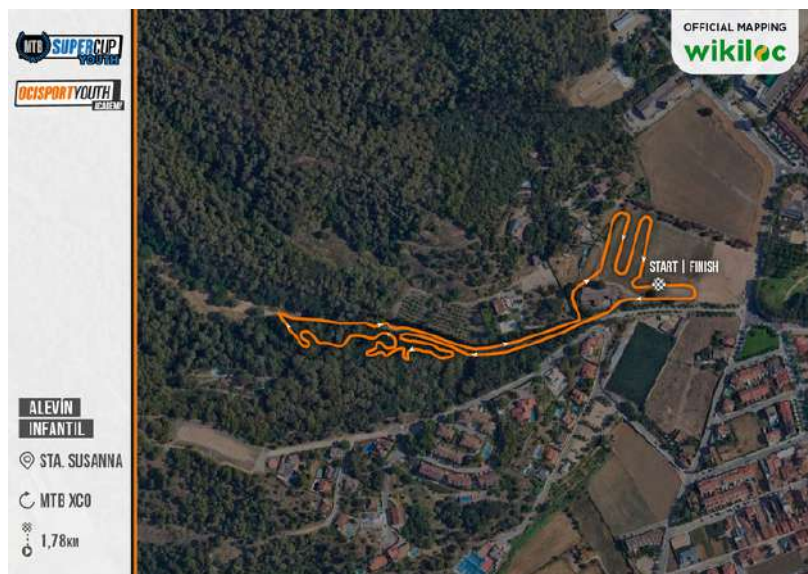
Pre-benjamín
Benjamín



Principiante



Alevín
Infantil





SHIMANO SUPER CUP MASSI



Shimano Super Cup Massi is the world's leading Mountain Bike competition. Since its birth in 2002, the prestigious being has grown spectacularly. After a long history, it is the second circuit that repeats the most points worldwide.

Circuit of 7 events formed by XCO of UCI category and scoring for the World ranking.



TITLE SPONSOR



MAIN SPONSOR



OFFICIAL SPONSOR



SUPPORTED BY



TECHNOLOGY PARTNER



OFFICIAL MAPPING



ORGANIZING





TRACK

SHIMANO
SUPERCUP MTB
MASSI

OFFICIAL MAPPING
wikiloc

COPA CATALANA
INTERNACIONAL BTT
Biking

STA. SUSANNA

MTB XCO

5,8KM

--- 1ST LAP
— TRACK
— TECH. ZONE

START | FINISH



wikiloc

Accede a las rutas oficiales
de OCISPORT BIKE en Wikiloc



BIB NUMBERS

In the first race in which you participate in the circuit, you collect your bib number and it will be the same for the following races on the circuit of the season. In case of loss, 5 euros will be charged for the reassignment of the participant's bib number and the new plate.

In the first test of each participant they will also be given the circuit t-shirt as a gift.

CHAMPIONSHIP POINTS

Regarding the **GENERAL** classification of Shimano Super Cup Massi, the 6 best results of each rider will score.

The distribution of points for the championship will be as follows:

CHAMPIONSHIP POINTS							
1	300	26	33	51	18	76	12
2	262	27	33	52	18	77	12
3	232	28	33	53	18	78	12
4	210	29	33	54	18	79	12
5	192	30	33	55	18	80	12
6	180	31	30	56	18	81	9
7	168	32	30	57	18	82	9
8	156	33	30	58	18	83	9
9	142	34	30	59	18	84	9
10	142	35	30	60	18	85	9
11	120	36	27	61	15	86	9
12	114	37	27	62	15	87	9
13	108	38	27	63	15	88	9
14	102	39	27	64	15	89	9
15	96	40	27	65	15	90	9
16	90	41	24	66	15	91	6
17	84	42	24	67	15	92	6
18	78	43	24	68	15	93	6
19	72	44	24	69	15	94	6
20	66	45	24	70	15	95	6
21	60	46	21	71	12	96	6
22	54	47	21	72	12	97	6
23	48	48	21	73	12	98	6
24	42	49	21	74	12	99	6
25	36	50	21	75	12	100	6
						101<	3



MONEY PRIZES

Ranking	Class 1 / Classe 1	
	XC	
	M&W ELITE	M&W JUNIOR
1	600€	130€
2	500€	100€
3	400€	80€
4	300€	65€
5	250€	55€
6	200€	45€
7	150€	40€
8	125€	30€
9	100€	25€
10	50€	20€
TOTAL	2,675€	590€

The prizes will be paid to the corresponding winners by bank transfer within a maximum period of two months after the race. The information panel for each test will also inform you of the procedure to receive the prize:

If you are one of the winners, you can write an email to the address: rperez@ocisport.net providing your personal and banking accreditation (ID and bank details), so that the organization can validate the identity and make the bank transfer corresponding to the prize obtained.

UCI POINTS

The UCI points score will be distributed as follows:

PLACE	ONE DAY RACE						
	HORS CLASS		CLASS 1		CLASS 2	XCO JUNIOR	XCO JUNIOR SERIES
	ELITE/ U23	U23**	ELITE/ U23	U23**	ELITE/ U23	JUNIOR	JUNIOR
1	100	60	60	15	30	20	90
2	80	40	40	10	25	18	70
3	60	30	30	5	15	16	60
4	50	25	25	3	12	14	50
5	40	20	20	1	10	12	40
6	35	18	18	X	8	10	35
7	30	16	16		6	8	30
8	27	14	14		4	6	27
9	24	12	12		2	4	24
10	22	10	10		1	2	22
11	20	8	8		X	X	20
12	18	6	6				18
13	16	4	4				16
14	14	2	2				14
15	12	1	1				12
16	10	X	X				10
17	9						8
18	8						7
19	7						6
20	6						5
21	5						4
22	4						3
23	3						2
24	2						1
25	1						X

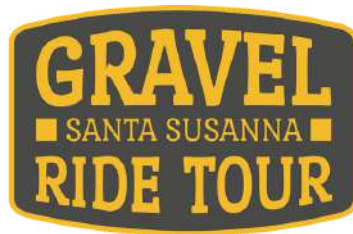


SEE THE RULES [HERE](#)



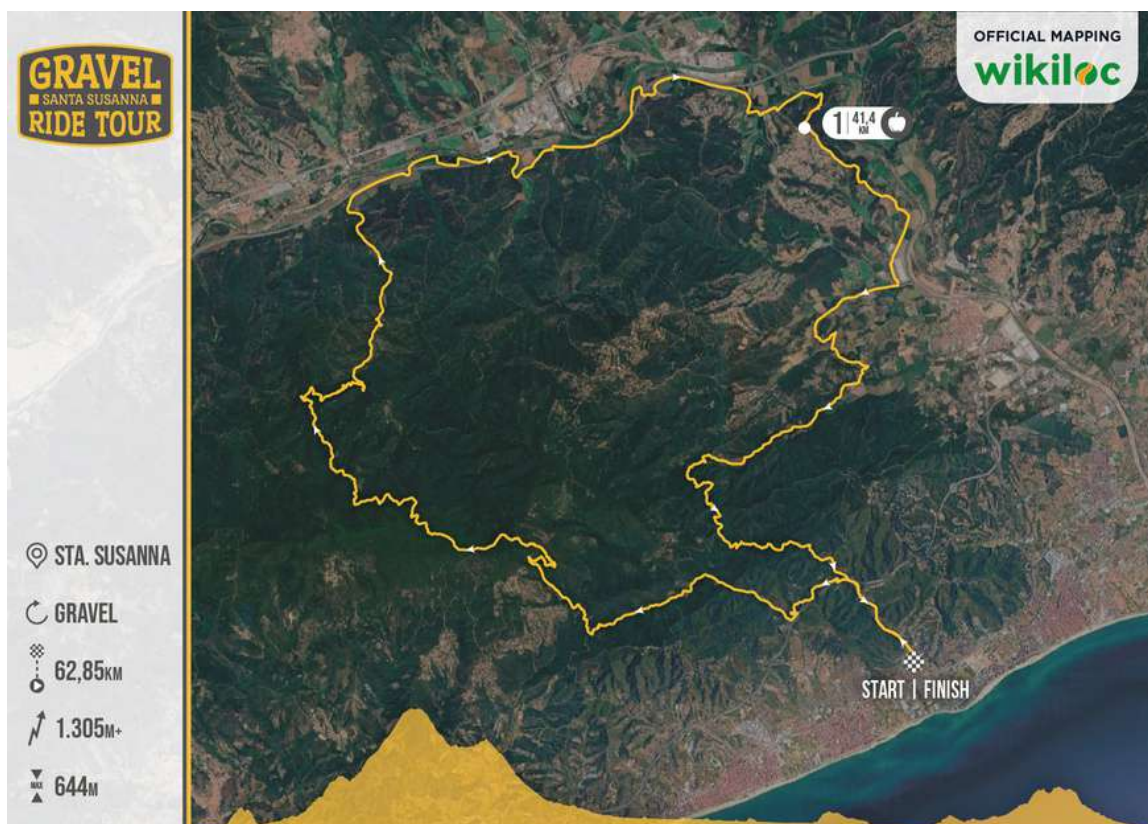
Rules of the CRI tests

- The approximate distance of an LRC race should be between 3 and 8 km, or a time equivalent to 5-20 minutes of running. The route may or may not coincide with the same XCO race. In any case the signalling will be specific for each race.
- The order of the exit will be reversed to the general classification of the Copa Catalana. If a participant doesn't show up at his scheduled time, he will start when the technical jury authorises it and his time will be counted from his previously assigned time. The interval between the runners will be 30". It is not allowed to use an opponents bicycle in case of a twist.
- The closing of the circuit will be effected 15' before the start.



The start will be at 9:45 a.m. on Saturday, April 6, and it is a NON-competitive Gravel ride, a mode with sectors of asphalt and/or paved track combined with forest track sectors of technical difficulty. or null.

The participants carry out a 63km route, leaving Santa Susanna and heading towards the surroundings of the Montnegre and Corredor Natural Park, to continue towards Fogars de la Selva, a nucleus that they will border closely, to later continue towards Tordera, Palafolls and finish at the same starting point, Santa Susanna, crossing the C32 through a basement passage.



THERE WILL ONLY BE ONE FOOD STATION ON THE CIRCUIT

This will be located at kilometer 41.5 of the route:

<https://maps.app.goo.gl/T3nQb5BLJsRBQK5aA>



Upon arrival there will be a final refreshment station for all participants.



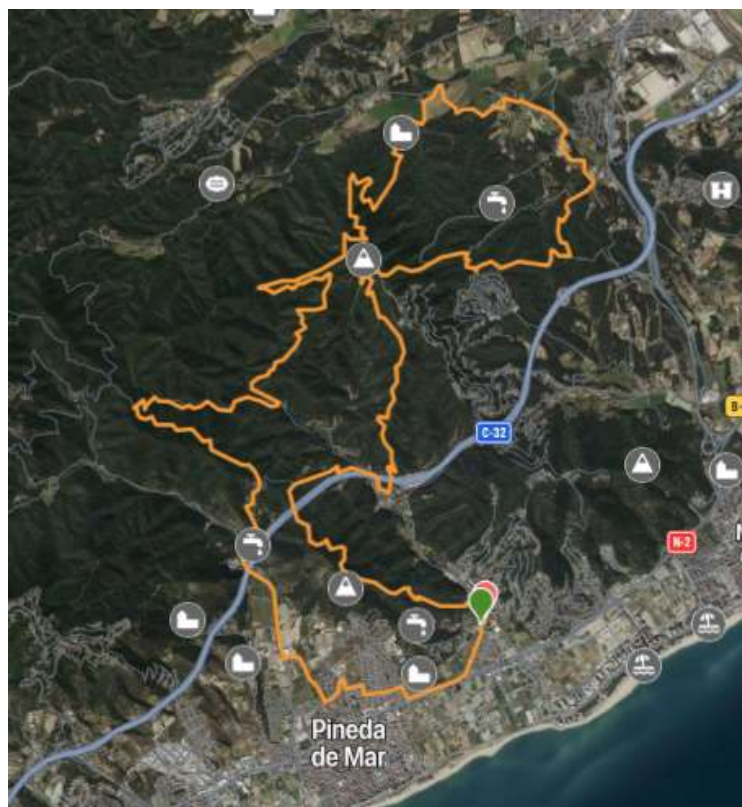
EBIKE DAY SANTA SUSANNA

A route designed for the E-bike style, to also enjoy the views, the landscape, the route and the gastronomy, with a track that runs through 6 hills and passes through the Montnegre Natural Park.

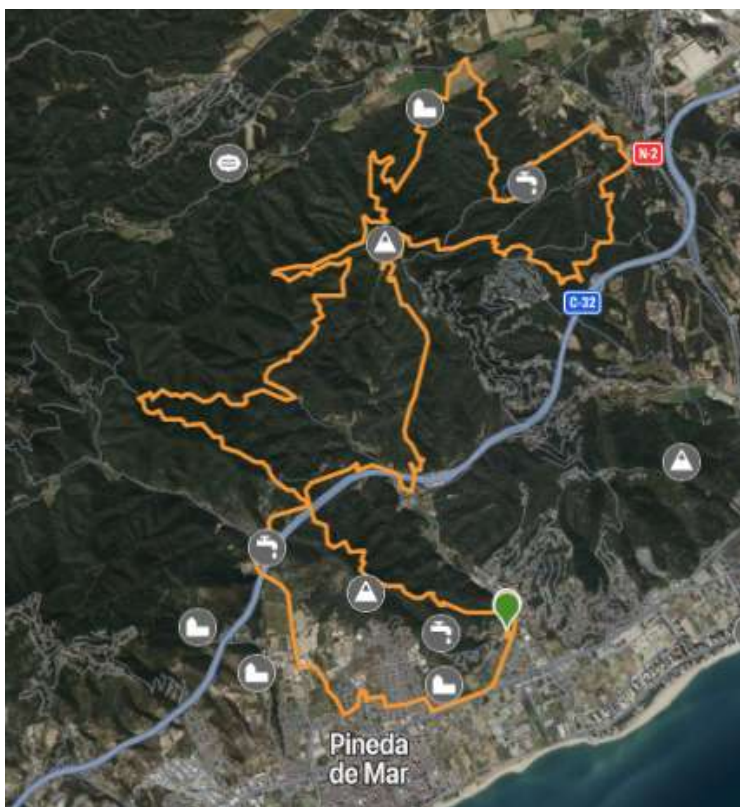
Total distance: 33 KM (Technical) and 31 KM (basic)
Solid/liquid supplies

There will be a refreshment station on the circuit that will be found at approximately kilometer 20 of the track. Content with full breakfast and on arrival there will be a good meal.

BASIC



TECHNIC



ADDITIONAL INFORMATION

MEDICAL SERVICES

During the race: 1 SVA & 1 SVB

NEAREST HOSPITAL

Hospital Comarcal Sant Jaume de Calella

Adreça: Carrer de Sant Jaume, 209, 217, 08370 Calella, Barcelona Horari:

Obert les 24 hores Servei d'urgències

Telèfon: 937 69 02 01

MERGENCY CONTACTS

Organization: +34 638 602 777

Emergency: 112





INSTITUTIONAL SPONSOR

OFFICIAL SPONSOR



SUPPORTED BY



MEDIA PARTNER



OFFICIAL BIKE WASH



OFFICIAL MAPPING



TECHNOLOGY PARTNER



ORGANIZER

